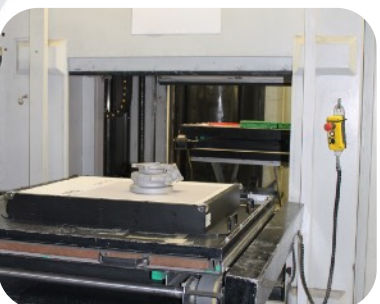
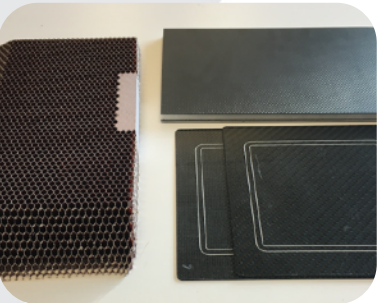


## X-ray DDA solution for film replacement in your shielded cabinet



### APPLICATIONS

- ▶ Weldings on pipes and plates
- ▶ Al, Fe, Ti, inconel and other alloys, plastic casting defects such as porosities, thermal cracks and inclusions ...
- ▶ Honey combs structures, composite materials (wrinkles, inclusions, ...)
- ▶ Historical assets
- ▶ Forensic investigations



### KEY FEATURES

- |   |  |
|---|--|
| Digital                                 | <ul style="list-style-type: none"> <li>▶ Direct digital image on the computer screen (no manual process)</li> <li>▶ User-friendly thanks to very <b>intuitive Maestro NDT</b> software</li> <li>▶ Post-processing with real time filters</li> <li>▶ <b>DICONDE</b>, TIFF &amp; JPG formats available</li> <li>▶ Easy archiving &amp; reporting</li> <li>▶ Efficiency and profitability drastically increased</li> </ul>  |
| Film -> digital radiology               | <ul style="list-style-type: none"> <li>▶ <b>Dereo RAD</b> is the easiest tool to work with in order to switch from traditional X-ray films to digital radiology inspection</li> </ul>  |
| X-ray video                             | <ul style="list-style-type: none"> <li>▶ X-ray video (1 fps scopy) for perfect and <b>rapid image adjustment</b> :<br/>No more headaches about the kV and mA calculation</li> </ul>  |
| Image quality                           | <ul style="list-style-type: none"> <li>▶ <b>Dereo RAD 4040</b> (200 <math>\mu\text{m}</math>) complies with ISO 17636-2                             <ul style="list-style-type: none"> <li>- Class A from 3 to 12 mm Fe</li> <li>- Class B for thickness higher than 12 mm</li> </ul> </li> <li>▶ <b>Dereo RAD 2530</b> (139 <math>\mu\text{m}</math>) complies with ISO 17636-2                             <ul style="list-style-type: none"> <li>- Class A from 2 to 8 mm Fe</li> <li>- Class B for thickness higher than 8 mm</li> </ul> </li> </ul> |
|   | <ul style="list-style-type: none"> <li>▶ Excellent signal to noise ratio (SNR) and contrast resolution better than 1 (EN 462-1)</li> <li>▶ 14 or 16 bit</li> <li>▶ Automatic and fast averaging</li> <li>▶ Different scintillator thickness available</li> </ul>   |
| Quick set-up                            | <ul style="list-style-type: none"> <li>▶ Very easy set-up (plug &amp; play) and use thanks to smart hard- and software features</li> </ul>   |
| Compatible with any high energy sources | <ul style="list-style-type: none"> <li>▶ Electronics of <b>Dereo RAD</b> are very well shielded and protected from X-ray dose. Thanks to that, it works with any other kind of constant potential generator, gamma sources (Se, Ir, Co) as well as betatrons and linear accelerators. Synchronisation is not needed. Delivery and installation is achieved very easily with existing generators at customer site.</li> </ul>   |
| Reinforced casing                       | <ul style="list-style-type: none"> <li>▶ In order to prevent scratches and knocks on the flat panel, <b>X-RIS</b> designed a reinforced casing which contains the DDA, a mains power supply, tough connectors, as well as the necessary lead shielding.</li> </ul>   |

## Dereo RAD DDA

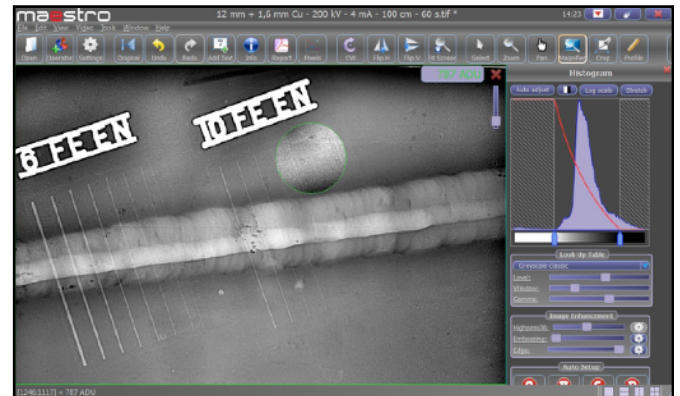


MODEL	TECHNOLOGY	ACTIVE AREA (cm)	PIXEL (µm)	GREY LEVEL (bit)	POWER
Dereo RAD 2530	@-Si	25 x 30	139	16	Battery or Mains
Dereo RAD 4040	@-Si	40 x 40	200	14 or 16	Battery or Mains

**Unique :** let us know your application and X-RIS will select the right scintillator for you

## MAESTRO NDT SOFTWARE

- ▶ Software interfaces developed **by and with field users**
- ▶ Very **intuitive** software interfaces. All key tools of **Maestro** accessible with one mouse click, only.
- ▶ Zoom in / out, screen adjustment, rotation, horizontal and vertical flip, cropping, ...
- ▶ Access to the LUT (look-up-table)
- ▶ Black and white reversal
- ▶ Annotations
- ▶ **Real time** magnifier
- ▶ **Real time** filters (Defect, Contrast, Edge, Noise reduction, ...)
- ▶ Smart measurement tools
- ▶ NDT Tools for normative inspections
  
- ▶ Bad pixels map
- ▶ **DICONDE**
- ▶ Compliant with all major NDT standards (ISO 17636, ASTM-E 2698, E2736, E2737, E2597, Safran PR5250, Airbus AITM 6-7007 and Boeing BSS-7044)
  
- ▶ Control of many X-ray generator brands and models
- ▶ Any language available upon request
- ▶ X-RIS is open to discuss the development of new software tools



## Dereo RAD WORK STATION

- ▶ Type: PC Tower
- ▶ Screen size : 21" or better
- ▶ Processor: Dual Core 64-bits (integrated graphics)
- ▶ RAM : 4Go DDR
- ▶ Windows 7 (64 bit) or Windows 8 (64 bit)
- ▶ Keyboard : AZERTY or QWERTY (US)

## Dereo RAD OPTIONS

- ▶ (µ)**GXC** X-ray generators from 80 to 450 kV, linear accelerators, ...
- ▶ X-ray cabinets
- ▶ Collimators controlled from **Maestro**
- ▶ **Maestro** viewer
- ▶ Specific computer screens for normative inspections
- ▶ IQI accessories

[www.xris.eu](http://www.xris.eu)